



TRACK &
ATTACHMENT
SOLUTIONS



V2024-A

PRODUCT CATALOGUS

Slijtdelen voor grondverzetmachines

PRODUCT CATALOG

Wearparts for earthmoving machines



ATTACHMENTS

Our quality is your success!



GP Equipment BV is een Nederlands bedrijf opgericht in 2007. Wij zijn gespecialiseerd in ontwikkeling, constructie, productie, verkoop en service van uitrustingsstukken voor grondverzetmachines.



GP Equipment BV is a Dutch company founded in 2007. We are specialized in development, construction, production, sales and service of equipment for earth-moving machines.





We produceren voornamelijk de volgende uitrustingsstukken:

- Snelwissels
- Banaanbakken
- Dieplepelbakken
- Slotenbakken
- Puinbakken
- Kantelbakken
- Rooirieken en harken
- Palletvorken
- Dichtschuiven
- Rippers voor graafmachines
- Grippers
- Grachtenbakken
- Verdichtingswielen
- Kettingbakken
- Slijtdelen
- Kopplaten voor sloophamers en scharen



We mainly produce the following equipment and accessories:

- Quick couplers
- Cable buckets
- Digging buckets
- Ditch cleaning bucket
- Skeleton buckets
- Tilttable ditch cleaning buckets
- Land rakes
- Pallet forks
- Dozer blades
- Rippers for excavators
- Sorting grabs
- Canal buckets
- Compacter wheels
- Chain buckets
- Wearparts
- Top brackets for hydraulic hammers and shears / crushers

Uitrustingsstukken worden geproduceerd voor machines van 0,5 tot 65 ton zoals:

- Mini en midi graafmachines
- Mobiele graafmachines
- Rups graafmachines

Accessories are produced for machine weight categories 0,5 to 65 tons such as:

- Mini and medium excavators
- Wheeled excavators
- Hydraulic tracked excavators



Voor nagenoeg alle wereldwijde grondverzetmachinemerken



For about all global construction machinery brands

Caterpillar

Hyundai

Kobelco

Komatsu

Doosan

Yuchai

New Holland

Develon

Airman

Case

Kubota

Peljob

Volvo

Yanmar

Terex

Liebherr

Takeuchi

en vele meer

Atlas

Bobcat

and many more

Neuson

Sunward

Hitachi

JCB

Our quality is your success!

SNELWISSELS - QUICK COUPLERS

HCW (hydraulisch / hydraulic)

CW00 | CW05 | CW10 | CW30 | CW40 | CW45



*HCW05



*HCW10

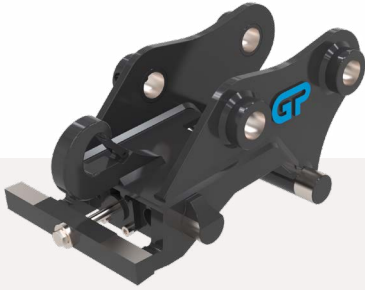


*HCW20-40



MCW (mechanisch / mechanical)

CW00 | CW05 | CW10 | CW30 | CW40



*MCW05



*MCW10



*MCW20-40



DCW (mechanisch met spindel / mechanical with spindle)

CW00 | CW05 | CW10 | CW30 | CW40



*DCW05



*DCW10



*DCW20-40



SACW (semi-automatisch / semi-automatic)

CW00 | CW05

Handel los meegeleverd
lever supplied separately



*SACW05



*SACW05



*SACW05

KOPPELSTUKKEN - HITCHES

MCW (mechanisch / mechanical)

CW00 | CW05 | CW10 | CW30 | CW40



*MCW05 - CW00



*MCW05 - CW10



*MCW10 - S40



DCW (mechanisch met spindel / mechanical with spindle)

CW00 | CW05 | CW10 | CW30 | CW40



*DCW10 - S40



*DCW05 - CW00



*DCW05 - CW10



HCW (hydraulisch / hydraulic)

CW00 | CW05 | CW10 | CW30 | CW40



*HCW05 - CW10



*HCW05 - CW00



*HCW10 - S40



Maatwerk?

Bel ons gerust!

Customization?

Feel free to call us!

Our quality is your success!

KANTELKOPPEN - TILTING COUPLERS



KK (cilinders)

CW00 | CW05 | CW10 | CW30

*CW05



*CW05 (vast / direct)



HKK (tilt motor)

CW00 | CW05 | CW10 | CW30 | CW40

*CW10 (vast / direct)



*CW10



*CW05 (vast / direct)

HKK powered by

rädlinger



BANAANBAKKEN - CABLE BUCKETS



*klasse 15 | CW05

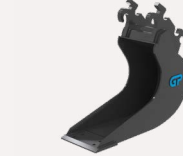
BBS (standard)

CW00 | CW05 | CW10 | CW30 | CW40

QT00 | QT05 | QT10 | QT30 | QT40



*klasse 50 | CW30



*klasse 30 | QT05



*klasse 25 | S40

BBST (flat-top)

S30 | S40 | S45 | S50 | S60



*klasse 15 | S30



*klasse 45 | S60



*klasse 25 | CW05

SBBS (semi-model)

CW00 | CW05 | CW10 | CW30 | CW40 | CW45

QT00 | QT05 | QT10 | QT30 | QT40 | QT45

S30 | S40 | S45 | S50 | S60



*klasse 40 | S45



OPTIONS

profielmes | tanden
half arrow profile | teeth



*klasse 50 | CW30



*klasse 30 | QT05



*klasse 20 | S30



*klasse 45 | S60

DIEPLEPELBAKKEN - DIGGING BUCKETS



*klasse 15 | CW05

DBS (DBH = heavy duty | DBR = reinforced)

CW00 | CW05 | CW10 | CW30 | CW40 | CW45

QT00 | QT05 | QT10 | QT30 | QT40 | QT45



*klasse 50 | CW30



*klasse 25 | QT05



*klasse 25 | S40

DBST (flat-top)

S30 | S40 | S45 | S50 | S60



*klasse 10 | S30



*klasse 45 | S60



*klasse 60 | CW40

SDBS (semi-model)

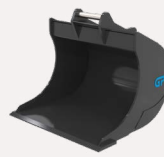
CW00 | CW05 | CW10 | CW30 | CW40 | CW45

QT00 | QT05 | QT10 | QT30 | QT40 | QT45

S30 | S40 | S45 | S50 | S60



*klasse 50 | S60



*klasse 30 | CW10

OPTIONS

Verstevigde varianten beschikbaar
Heavy duty variations available



*klasse 55 | CW40 ESCO



*CW30 CAT



*klasse 15 | CW05

SLOTENBAKKEN - DITCH CLEANING BUCKETS

SBS (standard)

CW00 | CW05 | CW10 | CW30 | CW40 | CW45

QT00 | QT05 | QT10 | QT30 | QT40 | QT45



*klasse 15 | CW05



*klasse 50 | CW30



*klasse 30 | QT05

SBST (flat-top)

S30 | S40 | S45 | S50 | S60



*klasse 25 | S40



*klasse 15 | S30



*klasse 40 | S50

OPTIONS

profielmes / half arrow profile



*klasse 30 | CW10



*klasse 30 | S40



Altijd kwaliteit door onze vakmensen

leder product wordt zorgvuldig gemaakt



Quality by our craftsmen

Every product is carefully made

Our quality is your success!



PUINBAKKEN - SKELETON BUCKETS



*klasse 15 | CW05

PBS (PBH = heavy duty)

CW00 | CW05 | CW10 | CW30 | CW40 | CW45

QT00 | QT05 | QT10 | QT30 | QT40 | QT45



*klasse 45 | CW30



*klasse 30 | QT05



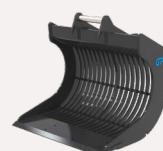
*klasse 25 | S40

PBST (flat-top)

S30 | S40 | S45 | S50 | S60



*klasse 10 | S30



*klasse 40 | S50



*klasse 55 | CW40

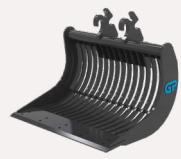
PBK (klinker-model / paving-model)

CW00 | CW05 | CW10 | CW30 | CW40 | CW45

QT00 | QT05 | QT10 | QT30 | QT40 | QT45



*klasse 45 | CW30



*klasse 25 | QT05



*klasse 45 | QT30

PBR (reinforced)

CW00 | CW05 | CW10 | CW30 | CW40 | CW45

QT00 | QT05 | QT10 | QT30 | QT40 | QT45



*klasse 65 | CW45



STRT (straatrick / paving rake)

CW00 | CW05 | CW10 | CW30 | CW40

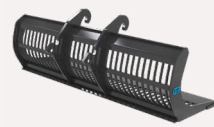
QT00 | QT05 | QT10 | QT30 | QT40



*klasse 30 | CW05



*klasse 45 | CW30



Verstevigde varianten beschikbaar
Heavy duty variations available

OPTIONS

profielmes | tanden
half arrow profile | teeth



*klasse 50 | CW30 ESCO



*klasse 15 | CW05



*CW30 CAT



*klasse 30 | CW10

KANTELBAKKEN - TILTABLE DITCH CLEANING BUCKETS

KB (tilt-model)

CW00 | CW05 | CW10 | CW30 | CW40 | CW45



*klasse 15 | CW05



*klasse 25 | CW05



*klasse 45 | CW30



OPTIONS

profielmes / half arrow profile



*klasse 15 | CW05



Our quality is your success!

ROOI RIEKEN / HARKEN - LAND RAKES

RR

CW00 | CW05 | CW10 | CW30 | CW40 | CW45

S30 | S40 | S45 | S50 | S60



*klasse 15 | CW05



*klasse 35 | CW10



*klasse 35 | S45



HARK

CW00 | CW05 | CW10 | CW30 | CW40 | CW45

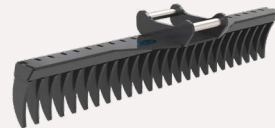
S30 | S40 | S45 | S50 | S60



*klasse 15 | CW05



*klasse 10 | CW00



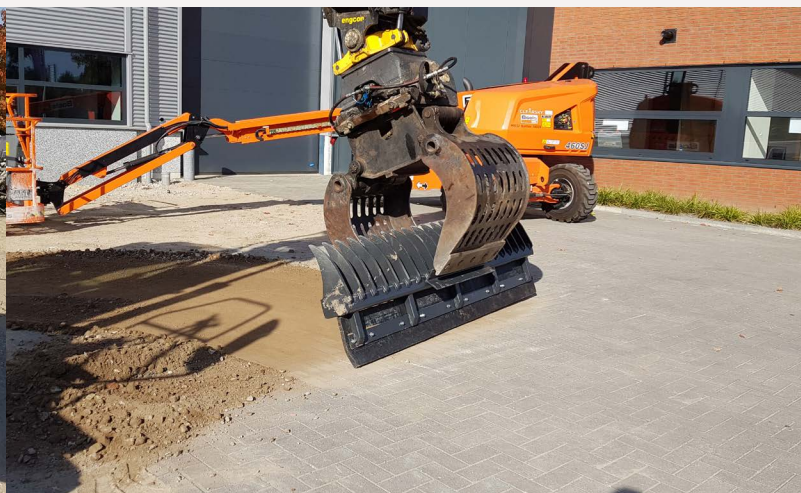
*klasse 25 | S40



*klasse 45 | CW30

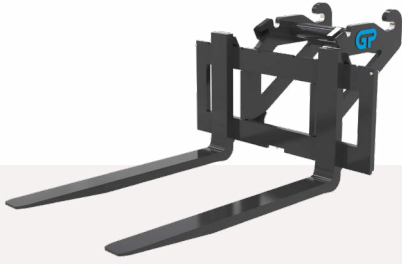
HARK (combi)

Te gebruiken met grijper / For use with sorting grab



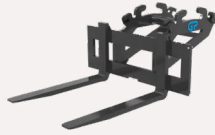
PALLETFRAMES - PALLET FORKS

PF



*CW05

CW00 | CW05 | CW10 | CW30 | CW40 | CW45
QT00 | QT05 | QT10 | QT30 | QT40 | QT45
S30 | S40 | S45 | S50 | S60 | S70



*QT30

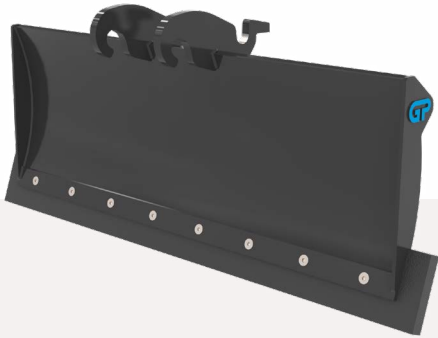


*S70



DICHTSCHUIVEN - DOZER BLADES

DS

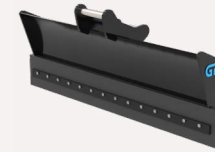
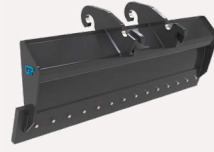


*CW05

CW00 | CW05 | CW10 | CW30 | CW40 | CW45
S30 | S40 | S45 | S50 | S60



*CW10



*S40

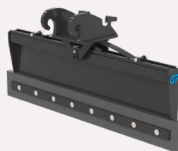


KDS



*CW05

CW00 | CW05 | CW10
S30 | S40 | S45



Our quality is your success!

RIPPERS

RIPPER

CW00 | CW05 | CW10 | CW30 | CW40 | CW45
S30 | S40 | S45 | S50 | S60



*CW05



*S45



*CW40



GR

CW00 | CW05 | CW10 | CW30 | CW40 | CW45
S30 | S40 | S45 | S50 | S60



*CW05



*CW10



*S45



Steeds meer!

We werken iedere dag aan de uitbreiding van ons assortiment.



More and more!

We work on expanding our product range every day.

GRIJPERS - SORTING GRABS



*CW30

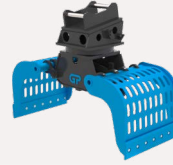
GP-D (met rotatie / with rotation)

CW00 | CW05 | CW10 | CW30 | CW40 | CW45

S30 | S40 | S45 | S50 | S60



*S60



GP-ZD (zonder rotatie / without rotation)

CW00 | CW05 | CW10 | CW30 | CW40 | CW45

S30 | S40 | S45 | S50 | S60



*CW30



*S60



GRACHTENBAKKEN - CANAL BUCKETS



*S60

GB

CW00 | CW05 | CW10 | CW30 | CW40 | CW45

S30 | S40 | S45 | S50 | S60



*CW05 (met sleuven - with slots)



*CW10 (geperforeerd - perforated)

VERDICHTINGSWIELEN - COMPACTOR WHEELS



*CW10 - 12T

VDW

CW00 | CW05 | CW10 | CW30 | CW40 | CW45
S30 | S40 | S45 | S50 | S60



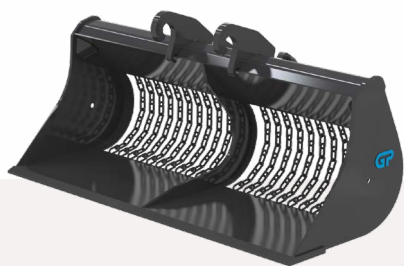
*CW40 - 30T



*S60 - 30T



KETTINGBAKKEN - CHAIN BUCKETS



*CW10

BBK-DBK-SBK

CW00 | CW05 | CW10 | CW30 | CW40 | CW45
S30 | S40 | S45 | S50 | S60



*CW30



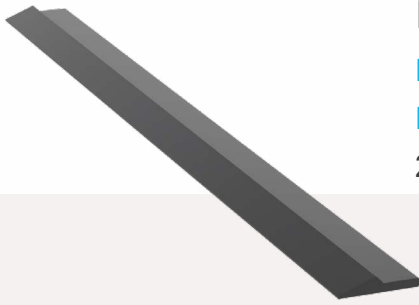
*S40



SLIJTDELEN - WEARPARTS

HALVE PIJL MESSEN - HALF ARROW BLADES & MOEDERMESSEN - STANDARD BLADES

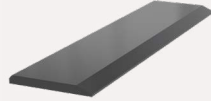
Halve pijl mes / Half arrow blade (mm) 21x101 | 32x151 | 32x203 | 57x254
Moedermes / Standard blade (mm) 12x110 | 16x110 | 16x150 | 20x150 |
20x200 | 25x150 | 25x250 | 30x250 | 30x300 | 35x300 | 40x300



*halve pijl mes / half arrow blade



*zijde / side



*moedermes / standard



*zijde moedermes / side standard

TANDEN - TEETH

Opschroef / Bolt-on | ESCO | CAT



*ESCO Ultralok



*Opschroef / bolt-on



*CAT J-series



*ESCO Super V

LASTHAKEN - LOAD HOOKS

1T | 1,5T | 4T | 7,5T | 12,5T



*1,5T



*1T



*4T



*7,5T



*I-catch

SPIEKAPPEN - WEDGE PROTECTORS

CW10 | CW30 | CW40 | CW45



*CW30



*CW10

KOPPLATEN - TOP BRACKETS

CW00 | CW05 | CW10 | CW30 | CW40 | CW45

QT00 | QT05 | QT10 | QT30 | QT40

S30 | S40 | S45 | S50 | S60



*CW05



*combi



*S variant



*(vast / direct)

ADAPTERPLATEN - ADAPTER PLATES

CW00 | CW05 | CW10 | CW30 | CW40 | CW45

QT00 | QT05 | QT10 | QT30 | QT40

S30 | S40 | S45 | S50 | S60



*standaard CW & QT / standard



*hamerplaat / hammer *S variant



*SW03



*Systeem 2000



*Volvo systeem

GRIJPERBEUGELS - GRAB BRACKETS

CW00 | CW05 | CW10 | CW30 | CW40 | CW45

QT00 | QT05 | QT10 | QT30 | QT40

S30 | S40 | S45 | S50 | S60



*CW10



*CW30





TRACK &
ATTACHMENT
SOLUTIONS



V2024-A

PRODUCTCATALOGUS

Slijtdelen voor grondverzetmachines

PRODUCT CATALOG

Wearparts for earthmoving machines



TRACKS

Our quality is your success!



GP Equipment BV is een Nederlands bedrijf opgericht in 2007. Wij zijn gespecialiseerd in verkoop van rijwerkonderdelen en reparatie van de meest uiteenlopende rijwerken van rupsaangedreven machines.



GP Equipment BV is a Dutch company founded in 2007. We are specialized in the sale of undercarriage parts and repairs of the most genuine undercarriages of track-driven machines.





We leveren voornamelijk de volgende rijwerkonderdelen:

- Rubbertracks
- Kettingen (staal)
- Rupsplaten
- Rubberpads
- Roadliners
- Rupsbouten en moeren
- Onderrollen
- Bovenrollen
- Spanwielen
- Spanveren
- Sprockets
- Aandrijfmotoren



We mainly supply the following tracks parts:

- Rubber tracks
- Track chains (steel)
- Track shoes
- Rubber shoe pads
- Roadliners
- Chain bolts en nuts
- Track rollers
- Carrier rollers
- Idler wheels
- Recoil springs
- Sprockets
- Travel motors

Wij leveren rijwerkonderdelen voor machines van 0,5 tot 100 ton zoals:

- Mini en midi graafmachines
- Rups graafmachines
- Dozers
- Schrankladers
- Rupsdumpers

Track parts are produced for machine weight categories 0,5 to 100 tons such as:

- Mini and medium excavators
- Hydraulic tracked excavators
- Dozers
- Skidsteer loaders
- Tracked dumpers



Voor nagenoeg alle wereldwijde grondverzetmachinemerken



For about all global construction machinery brands

Caterpillar

Hyundai

Kobelco

Komatsu

Doosan

Morooka

New Holland

Develon

Yuchai

Case

Kubota

Airman

Volvo

Yanmar

Peljob

Liebherr

Takeuchi

Terex

Atlas

Bobcat

en vele meer

Neuson

Sunward

and many more


Hitachi


JCB

Our quality is your success!

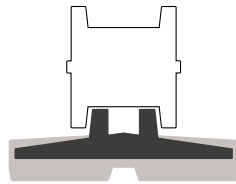
RUBBERTRACKS - RUBBER TRACKS

TRACKS EN ROLLEN / TRACKS AND ROLLERS

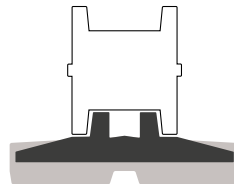
 De rollen welke op de tracks van jouw machine lopen zijn belangrijk bij de aanschaf van nieuwe tracks. Gelukkig hoef je dit niet allemaal zelf uit te zoeken want wij kunnen je aan de hand van het merk en type van je machine al vertellen wat je nodig hebt.

 The rollers which run on the tracks of your machine are important when purchasing new tracks. Fortunately, you don't have to figure this all out yourself, because we can tell you what you need based on the brand and type of your machine.

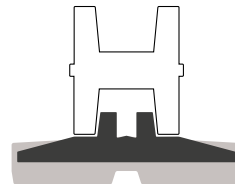
ROL TYPES / ROLLER TYPES



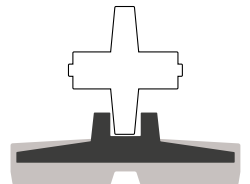
Op de nokken /
On teeth



Op de nokken en de track
/ On teeth and on track

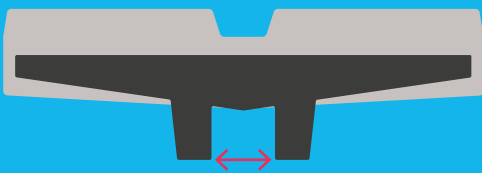


Naast de nokken
op de track /
Besides teeth on track

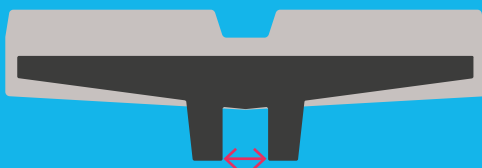


Tussen de nokken /
Between teeth

WIDE | NARROW



Breed spoor / Wide



Smal spoor / Narrow



RAILTYPE

Loopvlak langs de nokken /
Tread besides teeth

NON-MARKING (WHITE)

Tegen zwarte vegen op vloeren /
To prevent black streaks on floors





ASYMMETRICAL

Center uit het midden /
Off center

RUBBERTRACKS - RUBBER TRACKS (Voor alle klassen / for all classes)

RT (conventioneel / conventional)

breed | smal | wit
wide | narrow | white

Rollertypes  



*230mm



*250mm






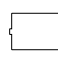


*320mm



*450mm

RT (uitwisselbaar / interchangeable) long pitch

breed | smal | railtype | wit
wide | narrow | railtype | white

Rollertypes      



*320mm



*180mm



*230mm

RT (uitwisselbaar / interchangeable) short pitch

breed | smal | railtype | asymmetrisch | wit
wide | narrow | railtype | asymmetrical | white

Rollertypes      



*450mm



*230mm



*300mm



*400mm

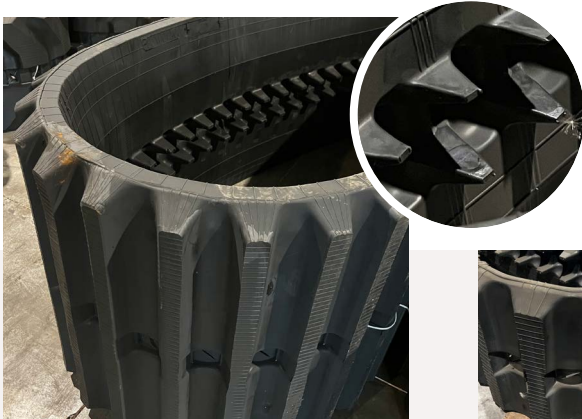


*500mm

RT (voor rupsdumper / for crawler dumper)

breed | smal | wit
wide | narrow | white

Rollertypes  



*700mm



*350mm



*450mm



*600mm



*800mm

Our quality is your success!

SPROCKETS



*opschroef / bolt-on

SP

opschroef | segmenten | laskrans
bolt-on | segments | weld-on rim



*opschroef / bolt-on



*opschroef / bolt-on



*segmenten / segments

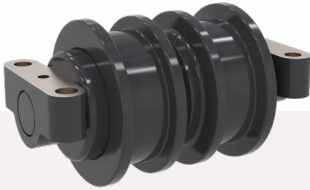


*laskrans / weld-on

ONDERROLLEN - TRACK ROLLERS

OR

vlak | middenflens | enkele flens | dubbele flens
flat | centre flange | single flange | double flange



*dubbele flens / double



*vlak / flat



*middenflens / centre



*enkele flens / single



*middenflens / centre



BOVENROLLEN - CARRIER ROLLERS

BR

vlak | middenflens | enkele flens
flat | centre flange | single flange



*vlak / flat



*vlak / flat



*vlak / flat



*middenflens / centre



*middenflens / centre

SPANWIELEN - IDLER WHEELS

SW



*Informeer naar verdere mogelijkheden

*Inquire about further features



*tanden / teeth



*spanveer / recoil spring

RIJMOTOREN - TRAVEL MOTORS

RM

~1.6T | ~2T | ~3T | ~4T | ~5.5T | ~7T | ~9T | ~13T | ~18T | ~22T | ~25T

1speed | 2 speed

open loop HD system | closed loop HD system



*~18T



*~3T



*~1.6T



*~3T



*~22T



Altijd een flinke voorraad

We kunnen snel leveren



Always a large stock

We can deliver quickly

Our quality is your success!

KETTINGEN - TRACK CHAINS



*complete ketting / complete chain

KE (schakels / links)

complete ketting | reparatie schakel | complete set met platen
complete chain | repair link | complete set with shoes



*reparatie schakel / repair link



*compleet met platen / complete with shoes



PERFORMING TRUST

EP (pennen, bussen en ringen / pins, bushes and rings)

normaal | eind
normal | end



*reparatie set (pennen en ringen) /
repair set (pins and rings)



*pen / pin



*met kop / with head



*bus / bush



*ringen / rings

RB-RM (bouten en moeren / bolts and nuts)

M10 - M27 | 12.9 (sterkte / strenght) | UNF 1/2 - 1 1/4



*bouten en moeren / bolts and nuts



 **Altijd producten onderweg**

 **Always products on the way**

RUPSPLATEN - TRACK SHOES



*3 ribs / triple grouser

RP

1 ribs / single | 2 ribs / double | 3 ribs / triple | draglines (vlak)
asymmetric | bent end | beveled end | oplegplaat / flat track shoe



*2 ribs / double grouser



*1 ribs / single grouser



*klapper / dragline

RUBBER PADS



*Roadliner

RL | BP | CP

roadliners | bolt-on pads | clip-on pads



*bolt-on pad



*clip-on pad



 **Rijwerk oplossingen**

 **Undercarriage solutions**

Powered by



PERFORMING TRUST

Our quality is your success!